

ABSOLUTE MACHINE MONITORING

Utilization and Downtime Tracking From



A Partnership in Production. Producing a Competitive Advantage with OEE Machine Monitoring

Shop floor equipment sold by **Absolute Machine Tools** comes with a powerful option for the inclusion of the robust and flexible **Scytec DataXchange** machine monitoring platform. The partnership between Absolute Machine Tools and Scytec Consulting Inc. has opened the door for end-users to achieve a new shop floor experience through DataXchange. Scytec DataXchange provides a feature-filled equipment monitoring solution with a low start up cost and a low monthly fee using the Cloud. No long-term commitments are required, and no minimum size order. Scytec offers an on-premise solution as well.



The Logic of Machine Monitoring Solutions

Managing by fact, decreasing downtime, improving utilization, and capturing hidden and unknown machine bottlenecks are the end results when implementing Scytec DataXchange machine monitoring system. Shop floor equipment will communicate automatically and accurately with Scytec DataXchange over Ethernet. Operators see data in real-time and communicate through the Operator Data Interface (ODI) using PCs or tablets, all while DataXchange dashboards communicate data, statuses, and messages. This structure grants management and leadership the ability to proactively identify and adjust, all the while communicating with shop floor personnel.

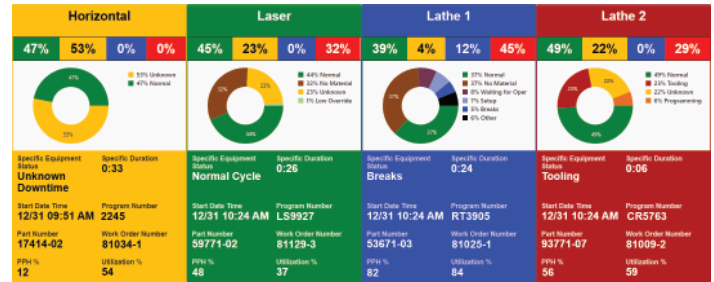
A New Way to Communicate

Scytec DataXchange is not just a traditional machine monitoring system, it is a modern shop floor communication system. DataXchange provides users with customizable dashboards, operator interfaces, and instantaneous alerts and notifications through text, email, and Microsoft Teams. Problems cannot be solved if they are not known about. Communication is the foundation for change and improvement and the key to that improvement is involving all stakeholders to utilize day to day operations with data-driven actionable truth. Empower your entire shop floor team to be proactive rather than reactive letting the data work for all members of the production team in a positive way.

Collecting The Data

MTConnect, Fanuc FOCAS, OPC UA, and Modbus TCP

Scytec DataXchange supports Ethernet-based protocols such as Fanuc FOCAS, OPC UA, MTConnect, and Modbus TCP supplying multiple data collection options, reducing or eliminating costly hardware needed for collecting data. Collect data over Ethernet from a wide range of CNC, PLCs, and more.



iPad, Android, Windows tablets, and Hardware

Older CNC and manual machines can use cost effective hardware to collect from voltage and current signals while tablets or PCs can be used for entry of downtime as well as recording other shop floor data.

Track Utilization, Part Numbers, Part Counts, and Alarms

View machine utilization against targets, part numbers and part counts against ideal times, along with reports and charts from alarm occurrences and durations. View everything from basic utilization to full OEE.

Using the Data

Dashboards, Reporting, and Charting

Scytec DataXchange dashboards can be configured to present the data in many different ways. End users can add and view their shop floor layouts, browser-based content such as Power BI or Microsoft Office 365 documents can be viewed, all side by side with production data. An unlimited number of screens can be defined, which can be configured to rotate and filtered by certain equipment, or by certain statuses making the DataXchange Real-Time Viewer a powerful visual management tool.

Email, Text, and Teams Notifications

Let the data work for you! Receive notifications if your machine is running in a low feed rate override for more than five minutes, or if your machine is sitting idle for more than fifteen minutes during an active shift. The notifications are configurable and unlimited, providing a powerful tool to proactively address issues before they become a real problem.

